

# STI Evacuation Chair Stopper<sup>®</sup>



## PRODUCT OVERVIEW

This sturdy, tamper-proof, self-contained device helps prevent the theft, misuse or vandalism of evacuation chairs, fire extinguishers or other free standing equipment. Experience has shown its highly visible 'STOP' sign design and the words "STOP, ALARM WILL SOUND" discourages wrongful use. The device contains a 9 VDC battery, a piercing alarm and a unique patented steel-cable-operated switch mechanism.

## HOW IT WORKS

When installing, the steel cable is inserted into the unit, when the equipment is removed and the steel cable is pulled out, the alarm sounds. Re-inserting the cable silences the alarm and re-activates the device. An ON/OFF keyswitch can be used to silence the alarm by authorised personal.

## KEY FEATURES

### General Information

- It has proved highly effective in helping prevent theft, misuse or vandalism of evacuation chairs.
- Does not interfere with use of protected equipment.
- Three year guarantee against breakage of the polycarbonate housing (one year on electromechanical and electronic components).

### Design

- Compact design (136mm diameter x 50mm deep) mounts easily next to the evacuation chair.
- Add warning in second language with provided labels (21 languages).

### Construction

- Virtually indestructible polycarbonate housing.
- Polycarbonate is UV-stabilized.
- Self-contained device, tamperproof and sturdy.

### Installation

- Easy to install.
- Deactivation cable is supplied for ease of servicing the protected device.
- Supplied complete with an operating cable kit, allowing the connection around the evacuation chair.

### Electronics

- Powered by a 9V PP3 alkaline battery (included).
- Sounds powerful 95/105 dB (at 1 metre) warning alarm when activated.
- An ON/OFF keyswitch can be used to silence the alarm by authorised personal.

### Options

- Option of coming with a built in wireless device, used in conjunction with the 8-Channel Receiver.
- Deactivation cable is provided for service by authorised personnel.

# STI Evacuation Chair Stopper®

Dimensions and Technical Information

## MODELS AVAILABLE

**STI-6200-KS-CHR** Evacuation Chair Stopper (includes operating cable kit)

**Accessories:**

**KIT-18015-9** Service/deactivation cable

**KIT-18015-RC** Operating cable kit (includes operating cable and seal)

**STI-6206** Seal

**KIT-H19016** Tamper key

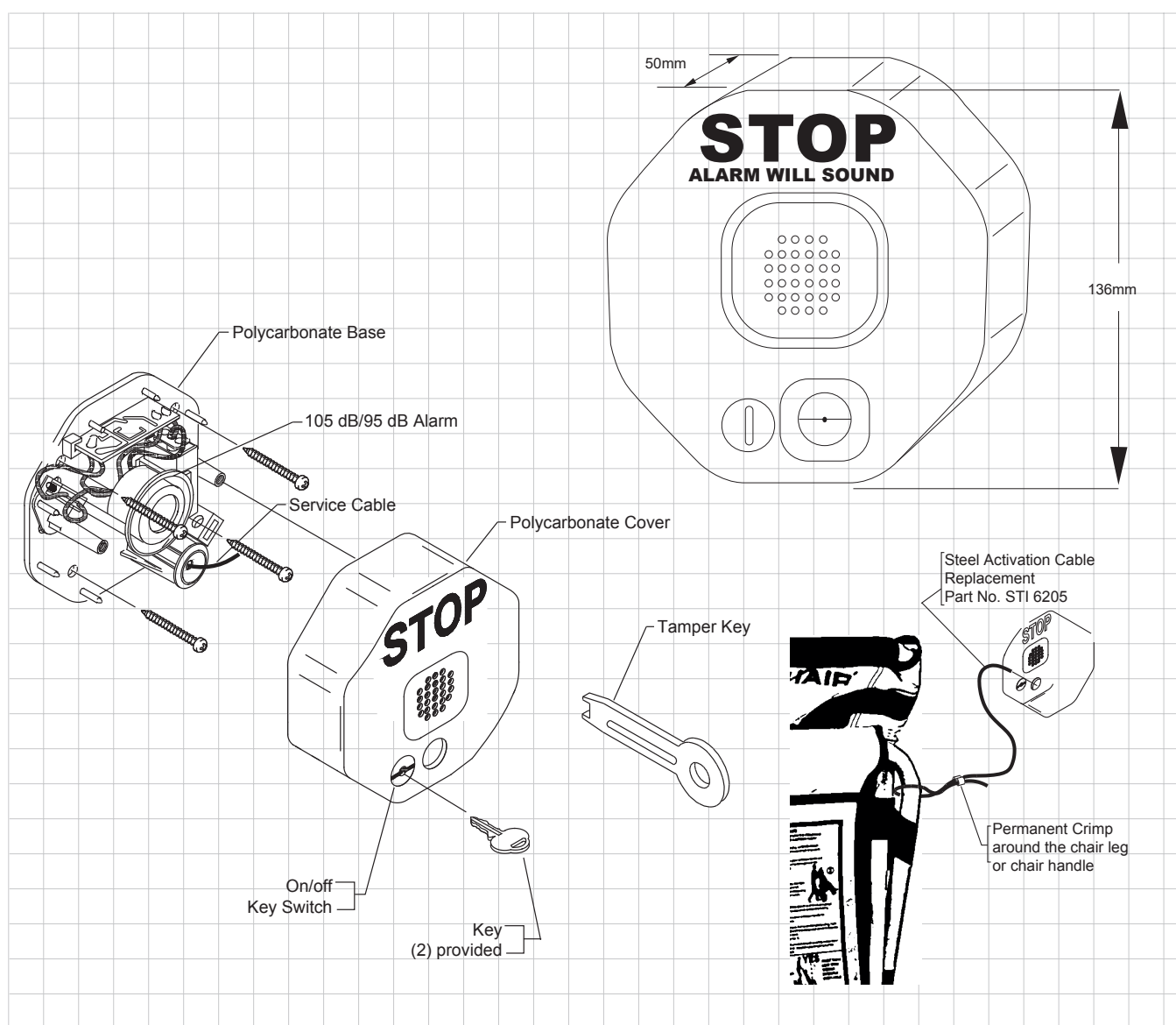
**NB:**

The STI-6200-KS-CHR comes complete with everything needed for a single Evacuation Chair installation

## SPECIFICATIONS

Housing	3mm polycarbonate
Dimensions	136mm H x 136mm W x 50mm D
Power Source	9 VDC Alkaline
Sounder Output (at 1 metre)	95 dB - low/ 105 dB - high
Operating Cable	3mm galvanised steel
Standby Current	None
Alarm Current	40 mA at 95 dB / 150 mA at 105 dB

\* 12 VDC and 24 VDC models are available



**Safety Technology International**

Taylor House  
34 Sherwood Road  
Bromsgrove  
Worcestershire  
B60 3DR, England

Tel: +44 (0)1527 520 999  
Fax: +44 (0)1527 501 999  
info@sti-emea.com  
www.sti-emea.com

2306 Airport Road  
Waterford, Michigan  
48327, USA

Tel: 248-673-9898  
Fax: 248-673-1246  
Toll-free: 0800-888-4784  
info@sti-usa.com  
www.sti-usa.com