



Automatic Opening Vent Control



TRUST • CHOICE • EXPERTISE • SUPPORT

Control Panels

AOV-3 & AOV-3H



Main Features

- Single zone conventional or Twin Wire
- 1A magnetic vent output
- 1 x 5A timed polarity reversal actuator control output
- Monitored trigger input
- Vent control switch inputs
- Fireman's control switch inputs
- Integral 3.0 Amp switch mode PSU

- Space for up to 3.2Ah batteries

Additional Features for High Spec Version

- Rain sensor input
- PIR sensor input
- 0/10v positional control input 10% steps
- 0/10v positional data output

AOV-5 & AOV-5H



Main Features

- Single zone conventional or Twin Wire
- 1A magnetic vent output
- 2 x 5A timed polarity reversal actuator control outputs
- Monitored trigger input
- Vent control switch inputs
- Fireman's control switch inputs
- Integral 5.0 Amp switch mode PSU

- Space for up to 12Ah batteries

Additional Features for High Spec Version

- Rain sensor input
- PIR sensor input
- 0/10v positional control input 10% steps
- 0/10v positional data output

AOV-10 & AOV-10H



Main Features

- Single zone conventional or Twin Wire
- 1A magnetic vent output
- 2 x 5A timed polarity reversal actuator control outputs
- Monitored trigger input
- Vent control switch inputs
- Fireman's control switch inputs
- Integral 10.0 Amp switch mode PSU

- Space for up to 12Ah batteries

Additional Features for High Spec Version

- Rain sensor input
- PIR sensor input
- 0/10v positional control input 10% steps
- 0/10v positional data output

Accessories

DETECTION EQUIPMENT



The control panels provide inputs for connection of a range of smoke detectors and manual call points.

The detection circuit can also be set to Twin Wire mode which would then allow connection of sounders and visual indicators on the same cabling to provide a single zone detection and alarm system.

TW Twin Wire Compatible

CALL POINTS & FIREMAN'S SWITCHES



- Orange or Yellow VENT RELEASE manual call points, 470Ω, resettable.
- Orange or Yellow VENT RELEASE Fireman's keyswitch, 3 position, labelled ON - AUTO - OFF.
- Orange or Yellow VENT RELEASE rocker switch, 3 position, labelled ON - AUTO - OFF.

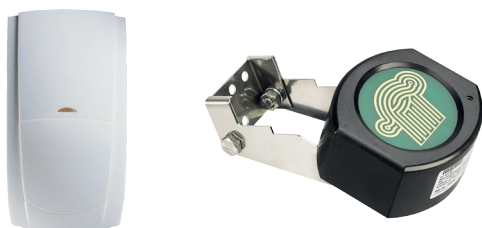
WINDOW ACTUATORS



Haes offers automatic window opening and closing solutions for a wide selection of different application cases.

The range includes easy to install and use electrically operated chain drives as direct openers plus powerful electrically operated spindle drives which, as direct openers and mounted on the surface of the profile, can also be used in an opening and locking system.

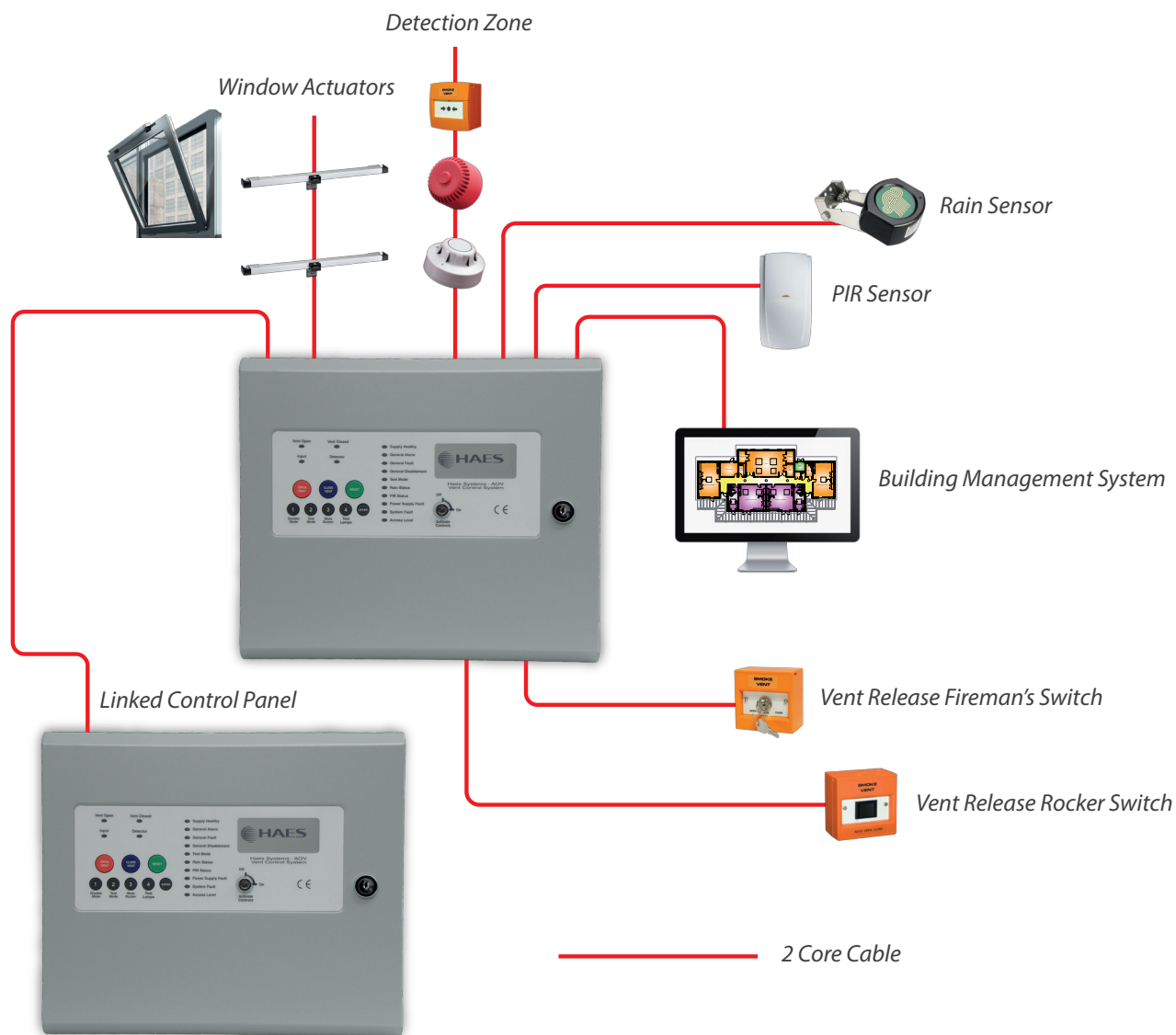
PIR & RAIN SENSORS



Rain sensors provide environmental control allowing vents to automatically close when rain is detected.

PIR (passive infra red) sensors can provide trap injury protection by detecting the presence of personnel around the vent area before closing.

The high spec versions of control panel provide dedicated inputs for both rain and PIR sensors.



www.haes-systems.com

Visit the Haes web site for technical specs, data sheets, brochures, installation guides and instruction manuals. Plus product support, FAQs, news, updates and much more..

Connect with us

