



GEC 6 - MULTI

INSTRUCTION MANUAL

GENERAL INFORMATION

THANK YOU FOR CHOOSING GLOBEX EVACUATION EQUIPMENT

CONTENTS

- General information
- Technical information
- Chair specification
- Preparing the chair for use
- Transfer of the user
- Descending the stairs
- Storing the chair
- Carry facility
- Contact Information

Globex Evacuation Chairs are designed to transport a user in a seated position down stairs and on level ground, the GEC6 can also be carried upstairs and over obstructions. The chairs are intended for use by suitably trained and competent operators only as an aid to provide safe and secure evacuation of non-ambulant persons from a building during an emergency or when lifts can not be used.

The responsible person must ensure that suitable and sufficient emergency procedures, equipment, training and maintenance is in place to ensure the safe evacuation of all users of the building whenever it is occupied without depending on the emergency services.

Please take time to read the contents of this manual that contains general instructions for the use, operation and care of the chairs. All other safety measures taken by the responsible person, operators and users should be with due consideration of applicable regulations and guidance. Safe and correct use of this chair is solely at the discretion of the operator.

This manual should be retained for future reference, additional copies are available upon request from Globex Europe Limited.

GLOBEX Evacuation Chairs come complete with:

- 1 x Dust Cover
- 1 x Wall mounting bracket
- 1 x Instruction card located in the rear of the seat

GENERAL INFORMATION

Upon receipt of your GLOBEX Evacuation Chair all packaging should be removed.

Initial visual checks should be carried out to ensure:

- The contents are complete as detailed above
- The chair has not been damaged in transit
- Seat, headrest and frame are all complete and in good condition
- All nuts and bolts are secure
- All wheels operate correctly
- Head and waist belts operate correctly
- Mechanisms easily open, close and engage as required
- Ski mechanisms open
- Rubber belts rotate freely around the guides

GUARANTEE

Subject to suitable and sufficient maintenance and inspection, GLOBEX Evacuation Chairs are guaranteed for five years against defective materials and workmanship. This may be extended with a GLOBEX Maintenance Package. Parts subject to wear and tear or damage caused by vandalism or misuse are excluded.

WALL MOUNTING

The chairs should be wall mounted in a suitable location in accordance with the building fire risk assessment and emergency procedures.

We recommend the chair is wall mounted at a suitable height so the wheels allow floor cleaning without the need to remove the chair from the wall. The bracket provided should be secured with suitable fittings.

GENERAL SAFETY INFORMATION

- Only suitably trained and competent operators should operate the chair and must practice regularly
- Only use the chair for its intended purpose
- Never exceed the maximum load capacity of 180 Kg.
- The operator must never leave a user in the chair unattended
- The operator must never let go of the chair when travelling down the stairs
- The operator must avoid rapid chair movement as this may cause injury to the user
- Only competent persons should maintain the chair.

TECHNICAL INFORMATION

GLOBEX Evacuation Chairs may be operated by one person but it is recommended that two operators are present, especially if the user is much larger than the operator. The second operator can provide reassurance to the user of the chair, assist with opening doors on the exit route and assist with the operation of the chair from the front if required.

For carrying the GEC6 two people must be present with a third to assist.

All operators must receive training provided by an authorised GLOBEX trainer, must be physically fit, wear appropriate foot wear and clothing, willing to operate the chair in the event of an emergency and understand emergency procedures and the users' personal emergency evacuation plan where applicable.

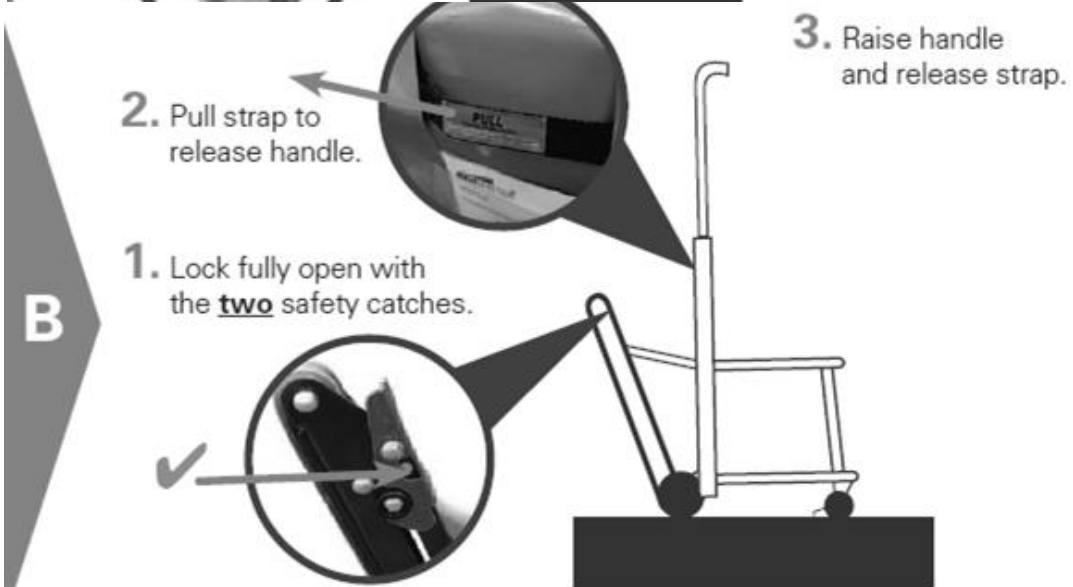
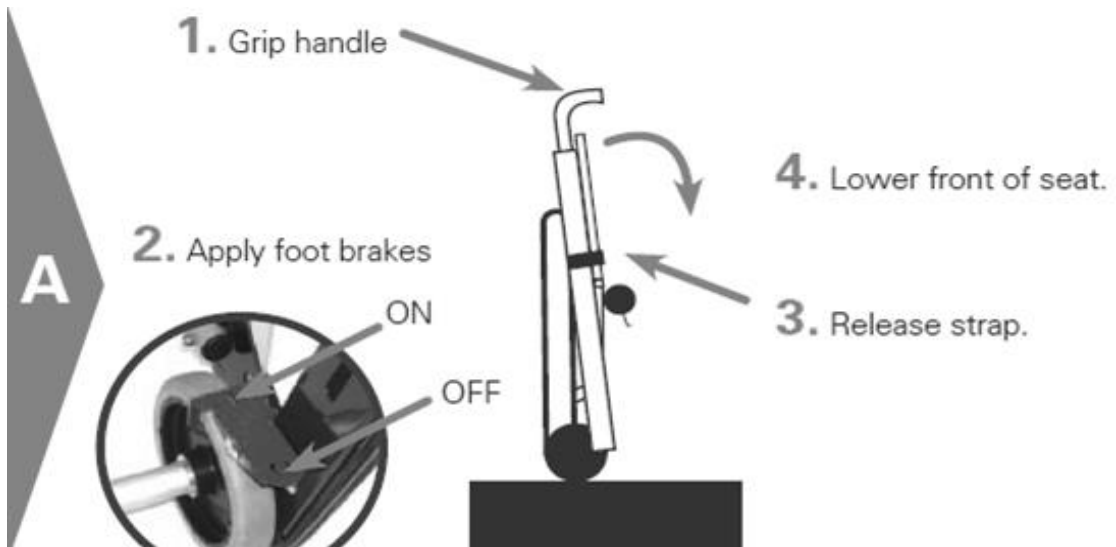


Model: GEC6 Globex Evacuation Chair
Operation: Downstairs, wheelchair transportation and carry facility
Construction: Aluminium

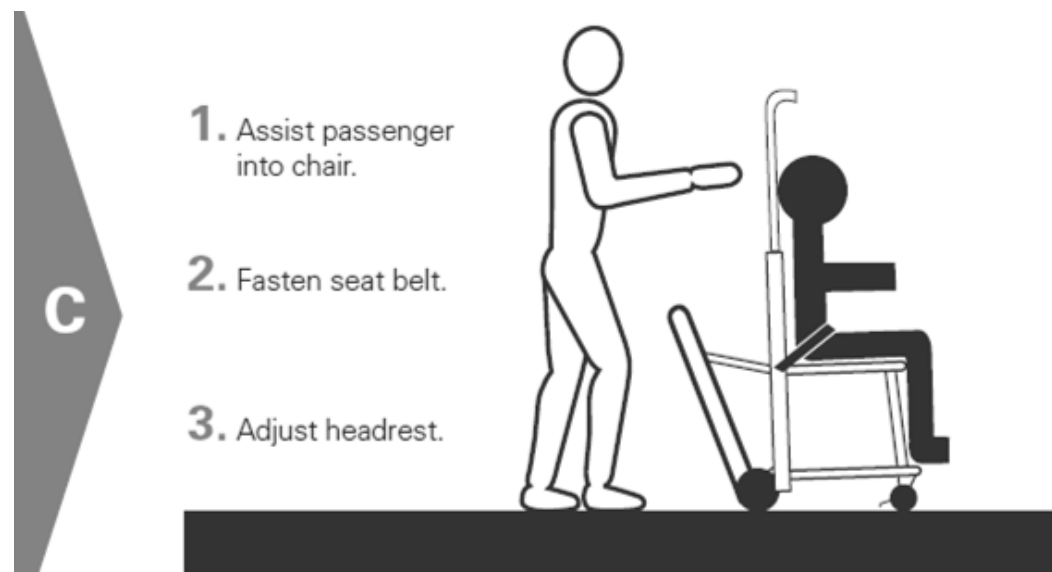
Open Height cm: 147
Folded Height cm: 104
Width cm: 49
Folded dimensions cm: 27
Weight kg: 15.2
Loading Weight kg: 180



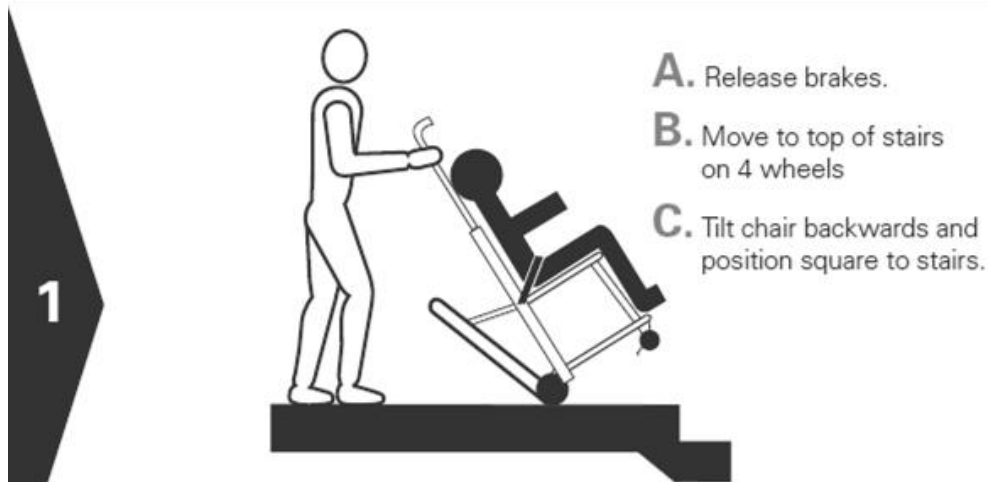
PREPARING THE CHAIR FOR USE



Safety Note: Do not release safety catches or adjust handle with passenger seated.

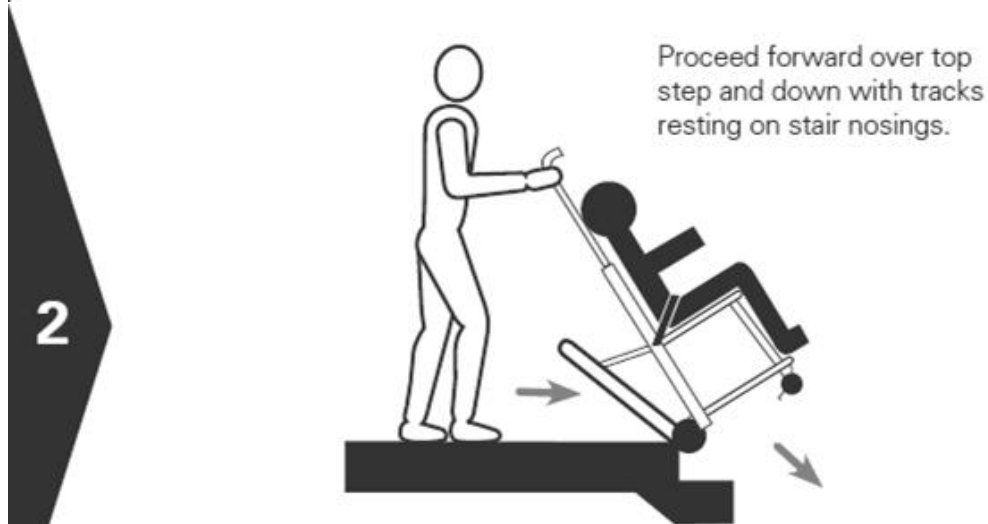


DESCENDING THE STAIRS

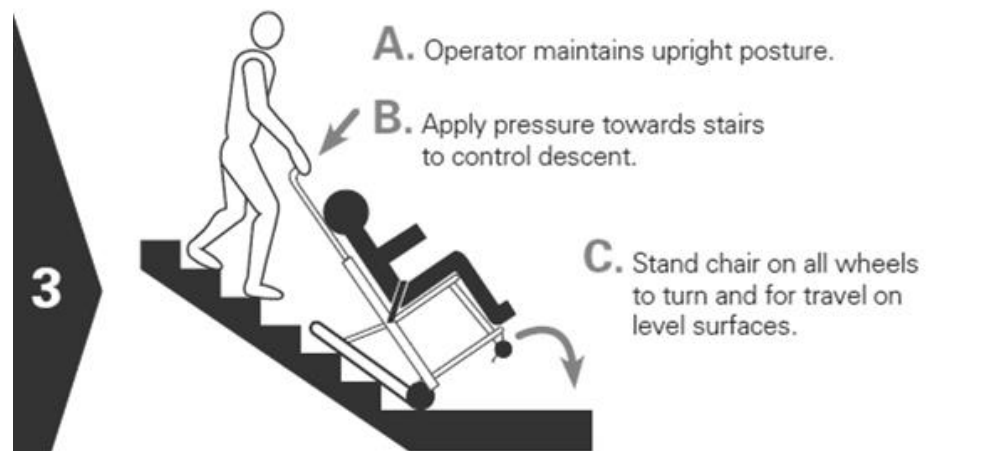


Tip: Use the balance point for ease at this stage.

Safety Note: Use additional operators for small spaces, uneven surfaces etc.



Tip: Communicate with passenger at every stage for reassurance.



Tip: You can also turn the chair inclined at the balance point

Tip: To ease forward tilt, stop with the rear wheels approx. 8cm (3") above landing.

Safety Note: Apply brakes if leaving chair and passenger unattended on level surfaces.

CARRY FACILITY

1. Raise rear carry / push handle
2. Prepare for use as Versa

A



Tip: Refer to instruction label on rear handle.

4. With passenger seated fasten and adjust 4 point harness straps if required

B



5. Tilt chair backwards at bottom step to raise front handles

C



6. Using 2 or more operators as necessary, lift the chair clear of the stairs and climb

Tip: Also for spiral stairs, over obstacles, rubble etc.

also...



Superb mobility on level surfaces with extended rear push handle.

Tip: Rear push handle can be folded down for stair descent if required.

CONTACT

GLOBEX Evacuation Equipment should be serviced at least annually by suitably trained competent personnel to ensure compliance with our requirements and PUWER (Provision and Use of Work Equipment Regulations) 1998.

As mentioned in this manual, all operators must be trained in the correct use of the equipment. Two certificated training sessions are available, one is an operator training session and the other is a trainer session for larger organisations who wish to train their own operators internally.

Combined maintenance and refresher training packages are available upon request.

Further information or assistance please contact the distributor from whom you purchased your equipment or contact us direct.

Head Office:

Globex Europe Limited
Unit 1 Hitch's Yard
Church Street
Ware
Herts
SG12 9ES
United Kingdom

T: +44 (0) 1920 449123

E: info@globexchairs.com

www.globexevacuation.com



© Copyright Globex Europe Limited - All rights reserved. No part of this document can be photocopied, reproduced or translated into another language without the written approval of Globex Europe Limited.